



THORNTON HOUSE

Thorntonhall, G74 5AL





WITHOUT QUESTION,
ONE OF THE FINEST
HOMES TO BECOME
AVAILABLE IN RECENT TIMES.

This substantial family home provides flawless, beautifully presented accommodation extending to over 13,000 sq ft, is situated within stunning landscaped gardens of approximately three acres, which includes a separate detached three bedroom gatehouse.

Without question, one of the finest homes to become available in recent times. This breathtaking mansionhouse and gatehouse provides generously proportioned and flexible accommodation which is finished to a specification and standard seldom seen today.









THORNTON HOUSE

Built only 10 years ago and using the finest materials available, this spectacular small estate leaves nothing to be desired and provides extensive family accommodation in 'as new' condition throughout.

Although substantial in dimensions, the house has been perfectly designed for modern day living and provides comfortable easily maintained accommodation with every conceivable modern convenience.

The floorplans and video will give a better idea of form and layout, but only upon viewing will one fully appreciate the unprecedented quality and design of this spectacular home.

The house sits on the edge of Thorntonhall village within a private three acre plot, yet benefits from superb views across open countryside.

The pillared entrance gives access to two driveways, both with secure electric gates. The main driveway leads past the gatehouse and sweeps through formal lawns to the front of the main house, whilst the secondary driveway gives direct access to garaging. The large detached three car garage block has a separate garden store, WC compartment and useful attic storage.

GROUND FLOOR

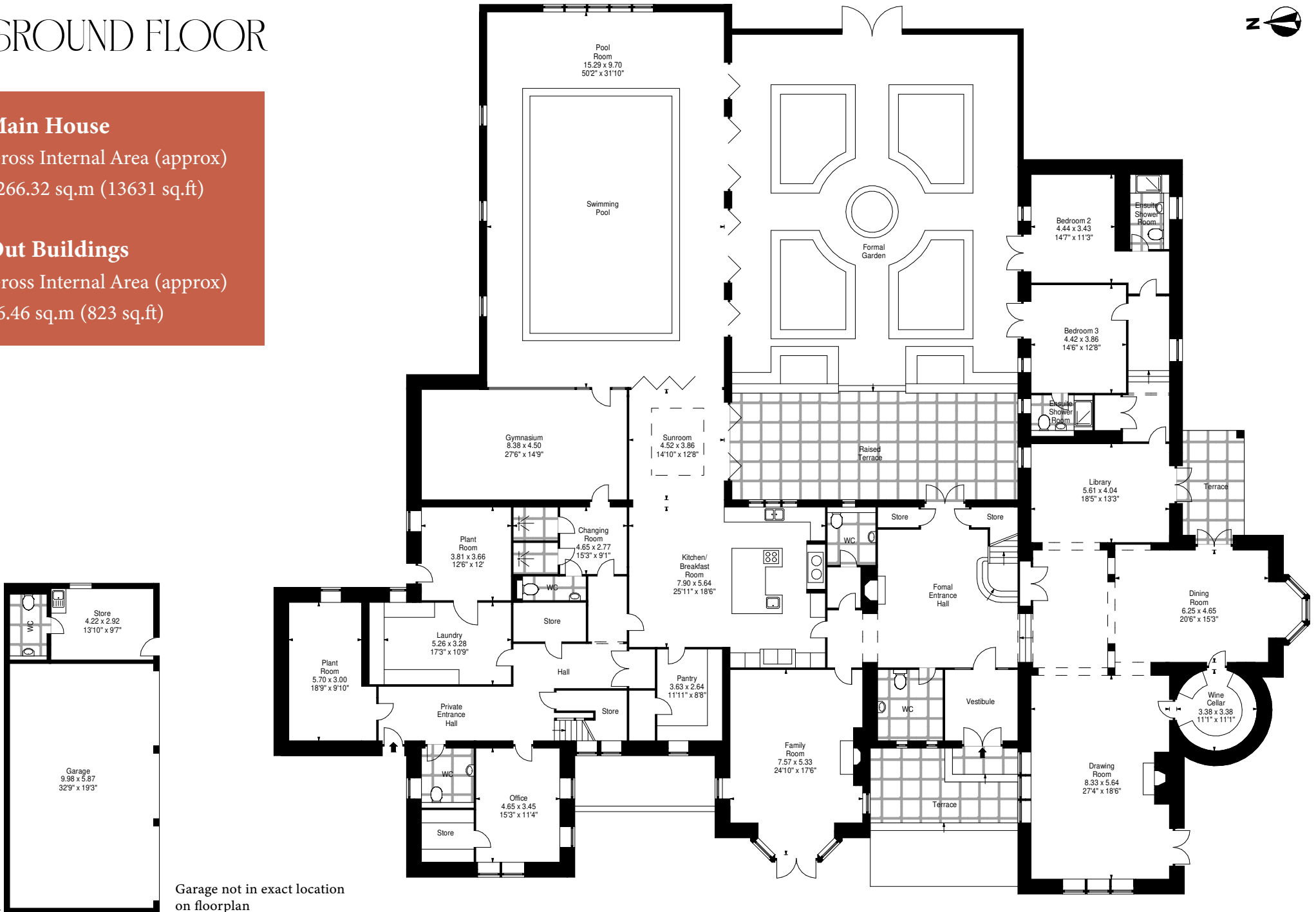


Main House

Gross Internal Area (approx)
1266.32 sq.m (13631 sq.ft)

Out Buildings

Gross Internal Area (approx)
76.46 sq.m (823 sq.ft)



Garage not in exact location
on floorplan



SPECIFICATION

- Stunning galleried hall with sweeping stone staircase
- Five principal public rooms
- Fully equipped breakfasting kitchen with pantry
- Kitchen, principal ensuite bathroom and powder room by Clive Christian
- Swimming pool complex
- Fully equipped gymnasium
- Laundry room
- Home office
- Wine Cellar
- Two guest bedrooms both with ensuite shower rooms
- Galleried upper hall with study area
- Principal bedroom suite with en-suite bathroom and extensive dressing room
- Second bedroom suite with private living room including integrated kitchen, ensuite bathroom and dressing room
- Three further double bedrooms, two with ensuites
- Large games room
- Home cinema room
- Extensive attic room
- Self contained central heating plant (CHP unit) self contained gas operated system which produces efficient electricity and heat for the house.





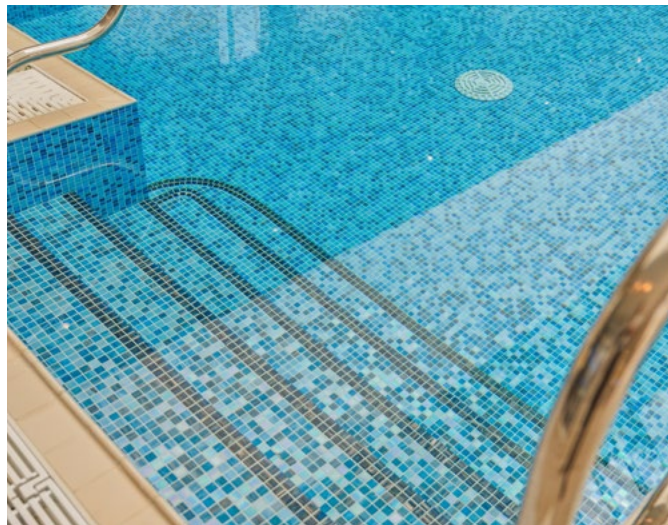




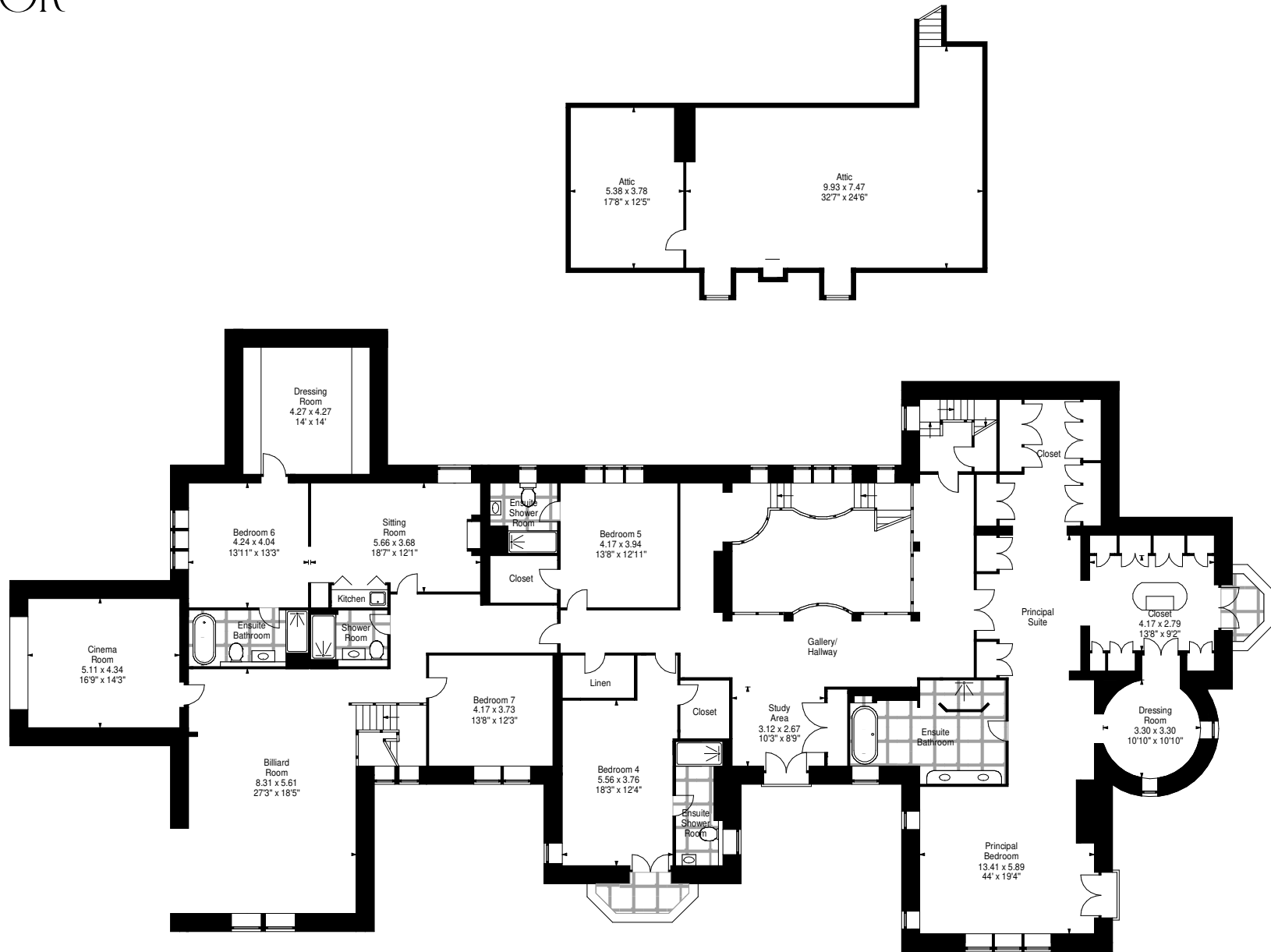








FIRST FLOOR

















THE GROUNDS

The gardens have been professionally designed and landscaped, and comprise extensive manicured lawns complimented by specimen mature trees, shrubs, and pathways all with discreet lighting.

To rear is a stunning walled courtyard garden with central fountain and large terrace, all directly accessed from the main house and pool complex. Double wrought iron gates give access to the beautifully manicured orchard.











THE GATE HOUSE

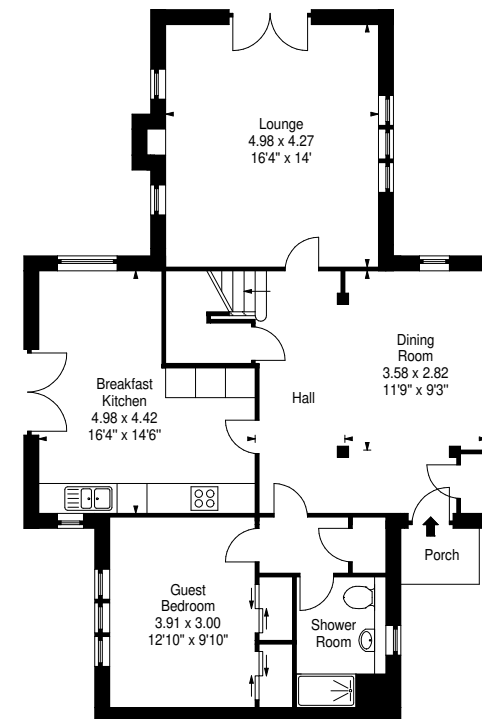
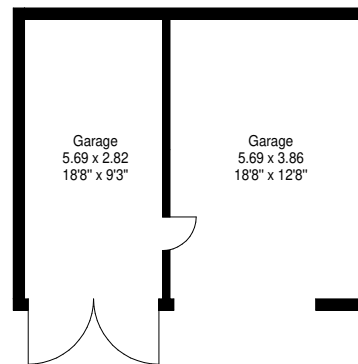
The Gate House is a delightful detached home of approximately 1600 sqft providing equally stunning accommodation with double height vaulted living room plus three bedrooms. This property has its own beautiful garden and attractive timber double garage.

The Gatehouse

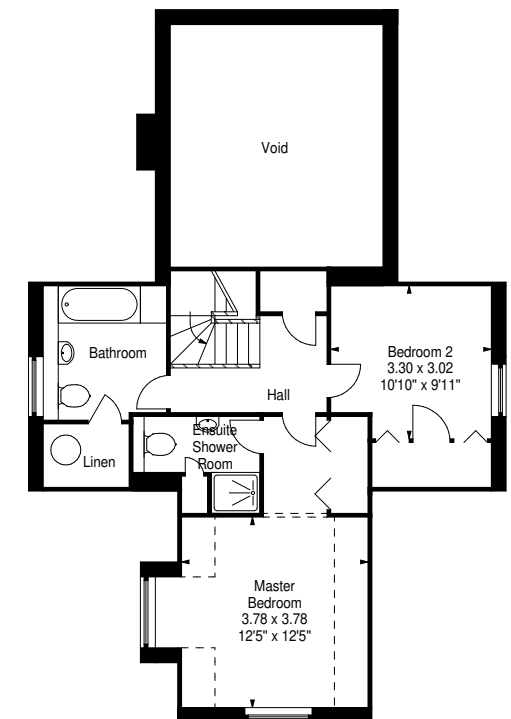
Gross Internal Area (approx)
146.78 sq.m (1580 sq.ft)

Garages

Gross Internal Area (approx)
39.20 sq.m (422 sq.ft)



Ground Floor



First Floor





Marketed in partnership



Marie Baines
Area Manager, Clyde Property

t. 0141 570 0777 e. marie.baines@clydeproperty.co.uk
a. 8 Busby Road, Clarkston, G76 7XL



Peter Walker
Area Director, Savills Glasgow

t. 0141 222 5875